

# Control4 Composer **Software**

---

## **MANUAL**

Thank you for using our network camera products. Our network camera products are integrated and developed for network video monitoring, including Storage Network Bullet, Wireless Storage Network Bullet, IR Network Dome, IR Network Weather-Proof Cameras and High-Speed Network Ball. High-performance single SOC chips are used in media processor for audio/video acquisition, compression and transmission/transfer. Standard H.264 encoding algorithm is applied to ensure clear and smooth video representation and transfer performance. Embedded Web Server offers users access to real-time surveillance and remote control of front-end camera through IE browser.

The network cameras are easy to install and operate. The network cameras are applicable to large and medium-size enterprises, governmental projects, large mall, chain supermarkets, intelligent buildings, hotels, Hospitals and schools and other group customers, as well as to applications requiring remote network video transmission and monitoring.

## **Instructions:**

- For purpose of this manual, IP camera means network camera.
- Single click means a single click on the left mouse button.
- Double click means a double-click on the left mouse button.
- The unit comes with DHCP enabled so it will obtain its IP from the router.
- The default factory administrator user name for IP camera is admin (in lowercase), and no password (You are requested to create a password if you log in to the camera IP address via your browser.
- The default Web port number is 80 and the default media port number is 9988.

## **Statement:**

Some information contained in this manual may differ from the actual product. For any problems you cannot solve using this manual, please contact our technical support or the authorized dealers. This manual may be subject change without prior notice.

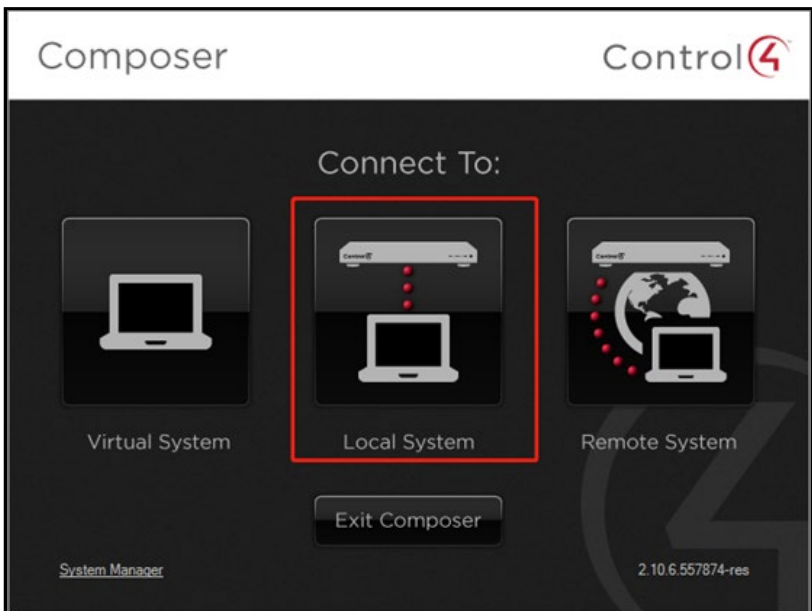
## Necessary steps:

1. Installer Control4 Composer 2.10.6
2. Copy our driver file to "C:\Users\8590\Documents\Control4\Drivers"

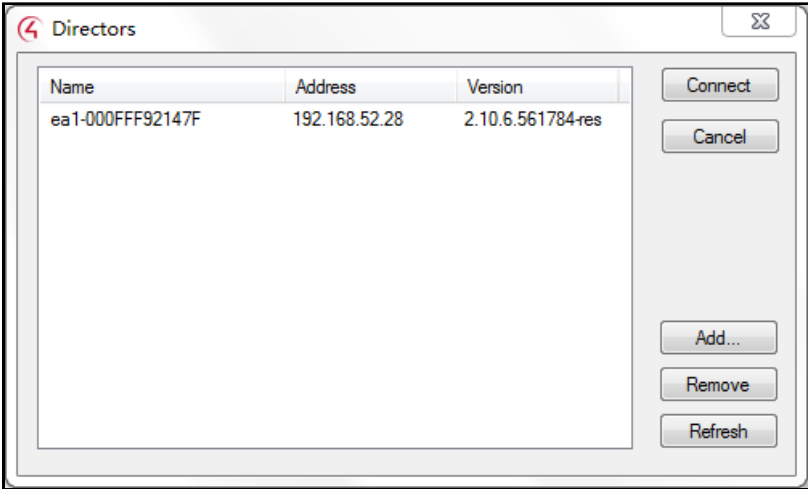
8590 is the user name, please select your own user name accordingly.

Name	Date modified	Type	Size
camera_AVYCON.c4z	10/9/2020 1:12 PM	C4Z File	188 KB
recorder_AVYCON.c4z	8/17/2020 10:11 AM	C4Z File	213 KB

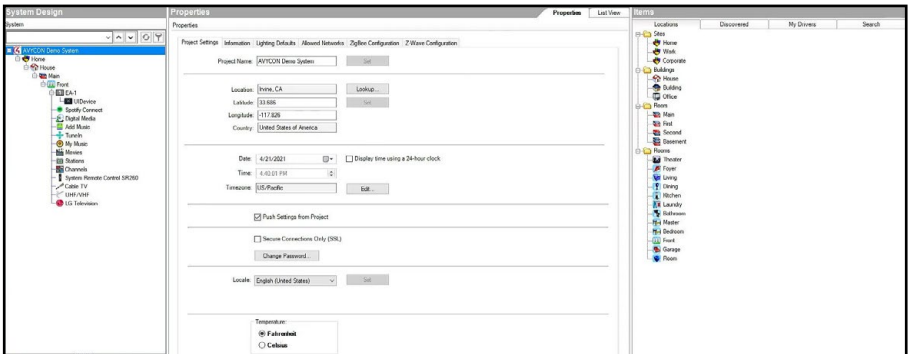
3. Run Control4 Composer, and select Local System in the menu.



4. In the following window, it will display all Control4 devices being found in same LAN.



5. Select your device, click "Connect", or double click on the device, you will connect successfully.

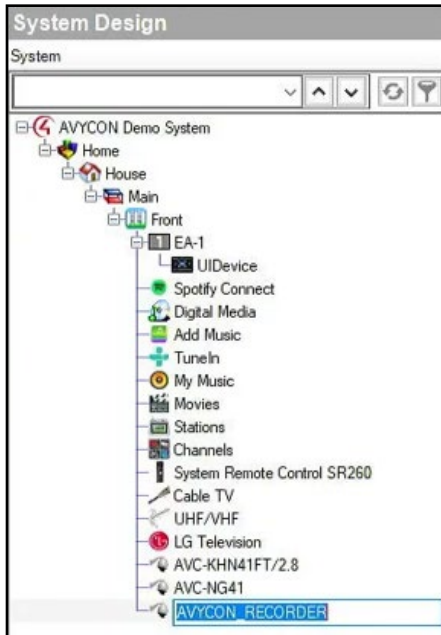


6. Following step is adding our recorder. On the right of the interface, in "Items" -"Search", type "AVYCON" in the search bar, then you will find the right driver as below:

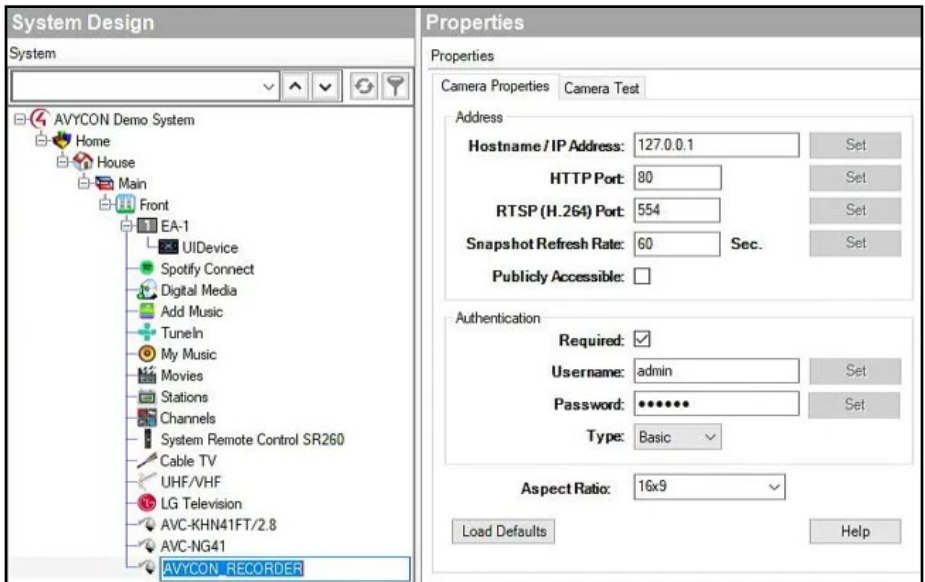
The screenshot shows a web interface titled "Items" with a search bar containing "avycon". The search results are displayed in a table-like format. The first result, "AVYCON\_RECORDER", is highlighted with a red box. Below it are "AVYCON\_CAMERA" and "Amazon Music". Each result includes the manufacturer name, a date and time, and a "Local" status indicator.

Item Name	Manufacturer	Date/Time	Status
AVYCON_RECORDER	AVYCON	8/17/2020 10:53 AM	Local
AVYCON_CAMERA	AVYCON	5/19/2017 5:48 PM	Local
Amazon Music	Control4	9/4/2019 10:45 AM	Local

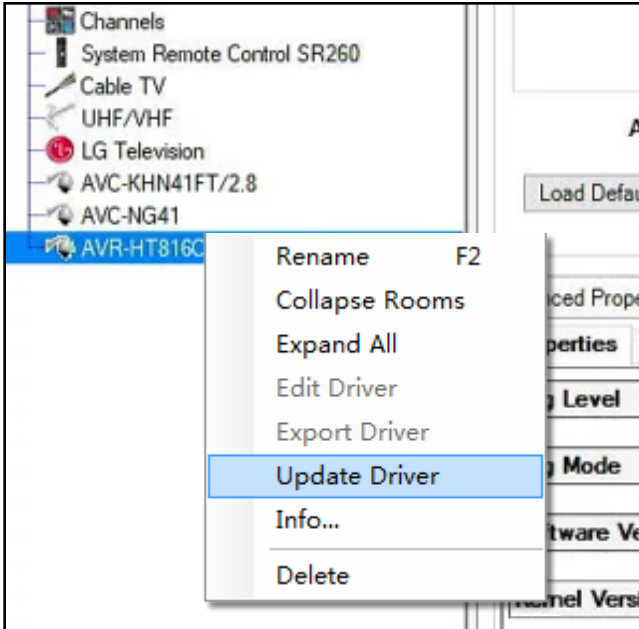
7. Select "AVYCON\_RECORDER", and double click, you can add our AVYCON recorder successfully.



8. Rename the camera, set appropriate IP address, port, UID/PSW, etc.

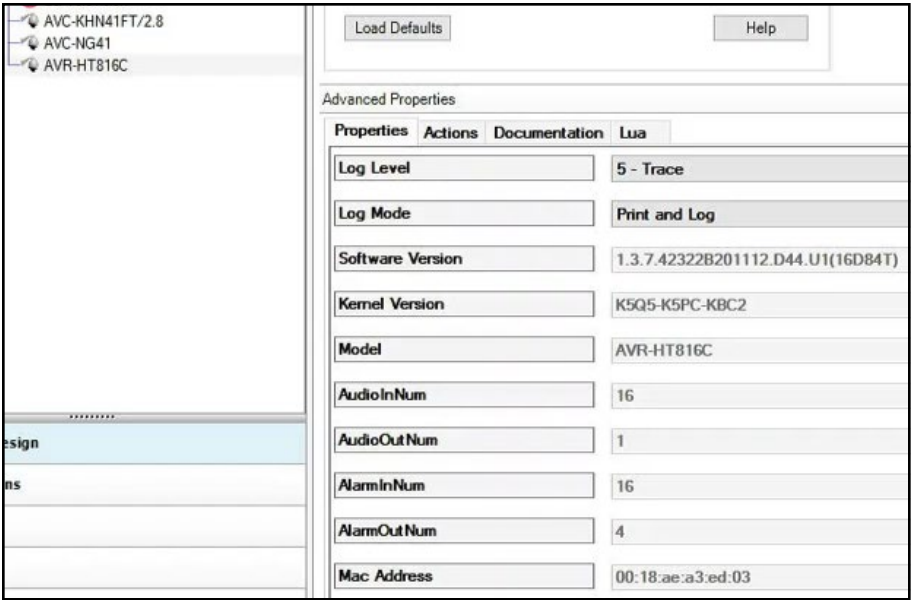


9. If you can not get right device info listed with above method, please right click on your recorder, select "Update Driver" to update your driver.

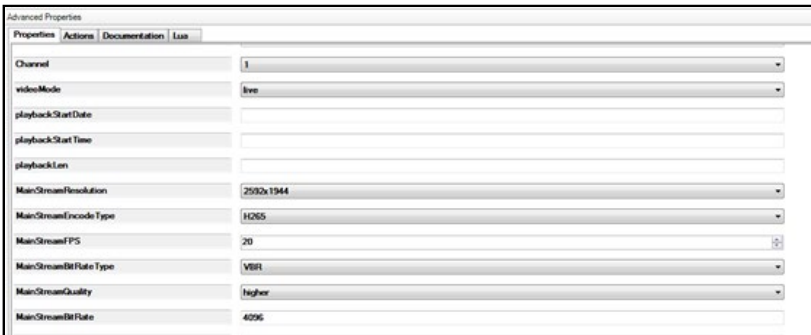


Select driver location "C:\Users\8590\Documents\Control4\Drivers" to choose the driver file "recorder\_AVYCON.c4z".

10. Input the right IP address, port, UID/PSW, Control4 should be able to connect to our camera now, and show our device parameters, FW version, model number in "Advanced Properties".



11. Switch channels: In drop down arrow of Channel list, it includes all online channel No., click "set", in other drop down menu or text box, they will show current channel's parameters like resolution, frame rate, etc.

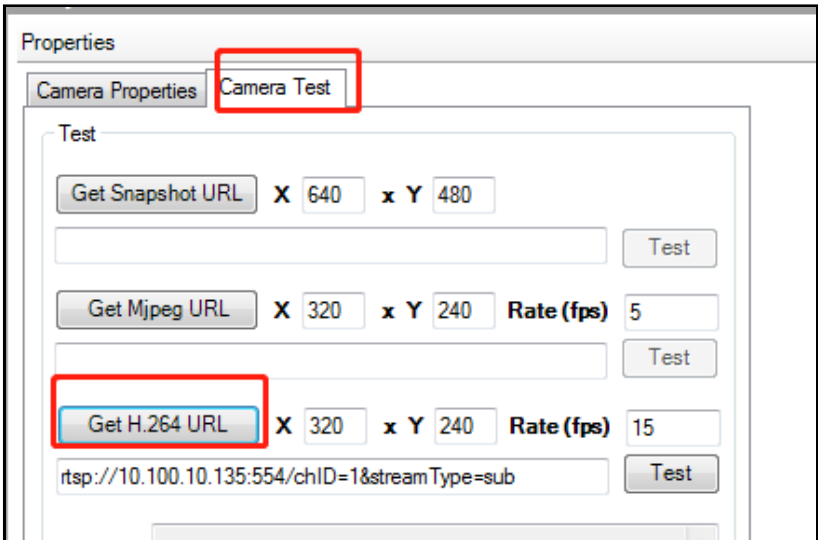




12. Change parameter settings on current channels: like frame rate for main stream, Under "MainStreamFPS" menu, click "Up" or "Down" arrow to adjust the value, click "Set" to save. Other parameters can be changed in the same way.



13. Live preview: Please follow step 11 to select right channel first, then change "Video Mode" into "live", select stream type, click "Camera Test", you will get what shown as below:



Click "Get H.264 URL", it will generate RTSP link address in the text box here, you can find its stream type is sub stream. If you want to change to main stream, please change the number next to "Get H.264 URL" to bigger values than 320, for example 321, then click "Get H.264 URL", you will get main stream.

Properties

Camera Properties Camera Test

Test

Get Snapshot URL X 640 x Y 480

Test

Get Mjpeg URL X 320 x Y 240 Rate (fps) 5

Test

Get H.264 URL X 321 x Y 240 Rate (fps) 15

rtsp://10.100.10.135:554/chID=1&streamType=main Test

You can find stream type is mainstream already, click "test" you to see if you can get the right stream.

Properties

Camera Properties Camera Test

Test

Get Snapshot URL X 640 x Y 480

Test

Get Mjpeg URL X 320 x Y 240 Rate (fps) 5

Test

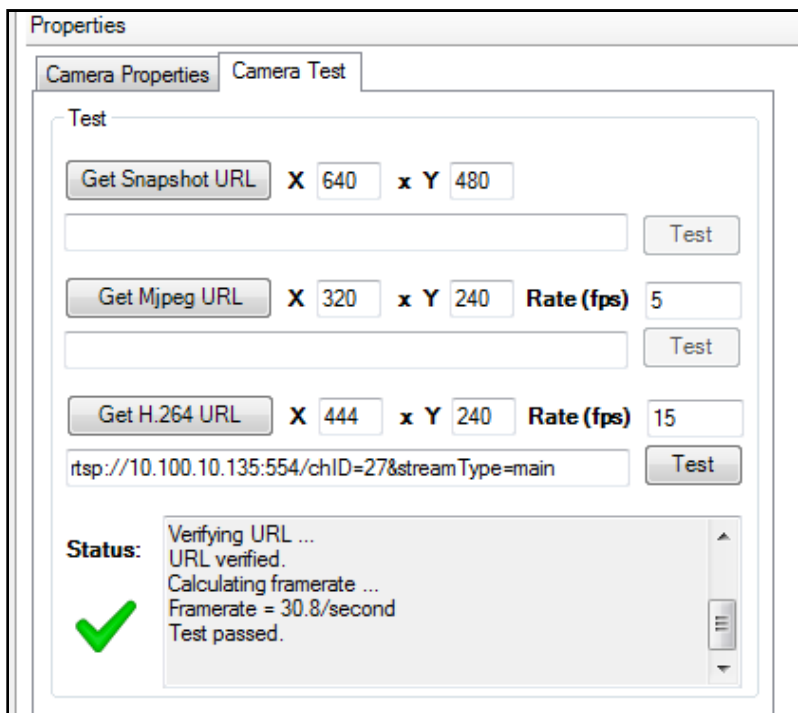
Get H.264 URL X 320 x Y 240 Rate (fps) 15

rtsp://10.100.10.135:554/chID=27&streamType=sub Test

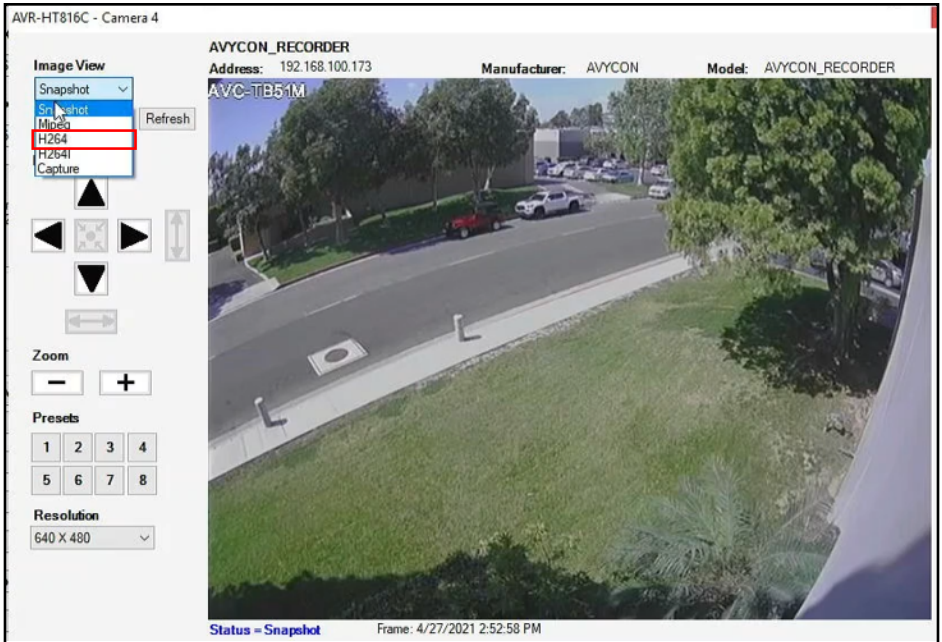
**Status:** Address port verified.  
Verifying URL ...  
URL not verified: Your GStreamer installation is missing a plug-in.  
Test failed.

If you find that "Your GStreamer installation is missing a plug-in", that is because Control4 support H264 only.

If your encoding format is in H.265, please change your encoding format to H264 and test again.



At this time, double click the recorder in the list, you will get live video pop up as below:



It is defaulted to snapshot status, change "Image View" to "H264", then you can change to live preview mode.

14. PTZ preset and call out: After finished above step 13 successfully, if current channel is PTZ camera, you can do PTZ control now, click direction, zoom, preset number to call out PTZ function.

15. Playback Follow step 11 to select the right channel number, change "Video Mode" in "Advanced Properties" into "playback", input date info in "playbackStartDate" and time length(s) in "playbackLen" click "Set" after every input;

<b>videoMode</b>	<b>playback</b>
<b>playbackStartDate</b>	<b>2020-05-14</b>
<b>playbackStartTime</b>	<b>02:57:30</b>
<b>playbackLen</b>	<b>300</b>

Change stream type in playback, please follow step 13.

If "Test failure", that is maybe during that period, there is no recording data for that channel, or maybe the encoding format is in H265.

### Properties

Properties

Camera Properties Camera Test

Test

Get Snapshot URL X 640 x Y 480

Test

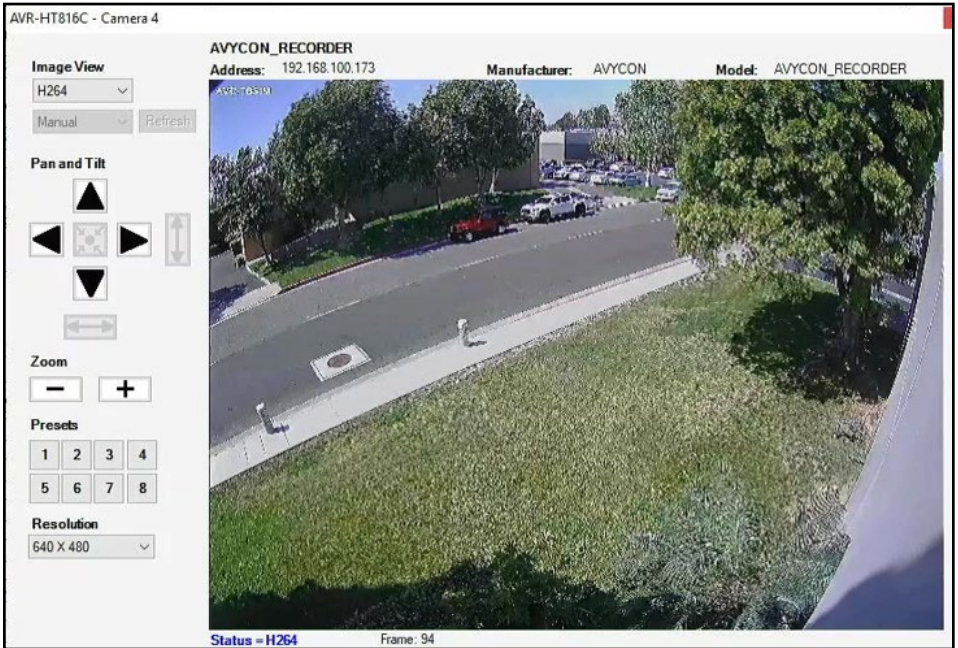
Get Mjpeg URL X 320 x Y 240 Rate (fps) 5

Test

Get H.264 URL X 333 x Y 240 Rate (fps) 15

rtsp://192.168.52.87:554/chID=9&date=2020-05-14&time=02 Test

**Status:** ✔ Verifying URL ...  
URL verified.  
Calculating framerate ...  
Framerate = 89.6/second  
Test passed.



16. AVYCON recorder driver is communicating via API protocol, so before connecting to our recorder, please enter device GUI, and enable API server first, which is under network settings, below "port" menu. The authentication method is BASIC.

Scan the following QR Code with your smart phone to visit our website and learn more.



## AVYCON

16682 Millikan Ave

Irvine, CA 92606

Email: [info@avycon.com](mailto:info@avycon.com)

Website: [avycon.com](http://avycon.com)

Tel: 949-752-7606

Toll Free: 888-8334611 (Canada)

Fax: 949-250-7076

The AVYCON logo is centered on the page. The letter 'A' is red with a white dot in the center, and the letters 'VYCON' are black. A registered trademark symbol (®) is located to the upper right of the 'N'. The background features a large, abstract, white, swirling shape that resembles a stylized 'A' or a lens flare, set against a light gray background.

**AVYCON**®



**AVYCON**®

Copyright © AVYCON. All rights reserved. Specifications and pricing are subject to change without notice.

**phone:** 949-752-7606

**email:** [info@avycon.com](mailto:info@avycon.com)

**social:** [@avycon\\_aivo](#)

**website:** [avycon.com](http://avycon.com)